

AF
ADELAIDE
FESTIVAL

CREATE⁴
ADELAIDE

WELCOME TO CREATE4ADELAIDE!

DO YOU WANT TO HELP SAVE THE PLANET?

Create4Adelaide will take you on an adventure all throughout the year, where you will be able to learn about climate change and its impacts in Australia. In March, 2,000 of your classmates voted on the top three climate change priorities for South Australia. Now, it is your turn to play your part!

HOW MUCH DO YOU KNOW ABOUT CLIMATE CHANGE?

This learning pack will help you discover everything there is to know about climate change, to then create powerful artworks.

LET'S CREATE!

Your artwork should suggest how South Australia can address your chosen priority - a drawing, a painting or a campaign idea... So many ways to make your voice heard!

Your participation can change the world and help to build a cleaner planet for your friends, your families, and all the people of Adelaide.

 THIS PACK GIVES YOU :

**ABOUT
CREATE4ADELAIDE** P01

**WHAT IS
CLIMATE CHANGE?** P02

3 PRIORITIES P04

01

WHAT IS CLIMATE CHANGE?

C4A

02

WHAT IS CLIMATE CHANGE?

Human and industrial activities have increased over the last 150 years. This has led to devastating consequences for our planet, mainly because of:

- **PRODUCING AND CONSUMING TOO MUCH:**



Food is produced in mass quantities, yet **33%** of it is wasted every year!

- **MAKING CHOICES THAT ARE DISRESPECTFUL TOWARDS THE ENVIRONMENT:**

Using transports such as cars is harmful for the environment

There are more than **17 million** cars in Australia!

Only **13%** of plastic in Australia is recycled, the rest goes to landfill!



THESE HUMAN ACTIVITIES ALL GENERATE LARGE AMOUNTS OF GREENHOUSE GASES. THESE GASES TRAP THE ATMOSPHERE'S HEAT, LEADING TO INCREASED TEMPERATURES ON EARTH.

THIS IS WHY WE TALK ABOUT GLOBAL WARMING AND CLIMATE CHANGE.

02

PRIORITIES

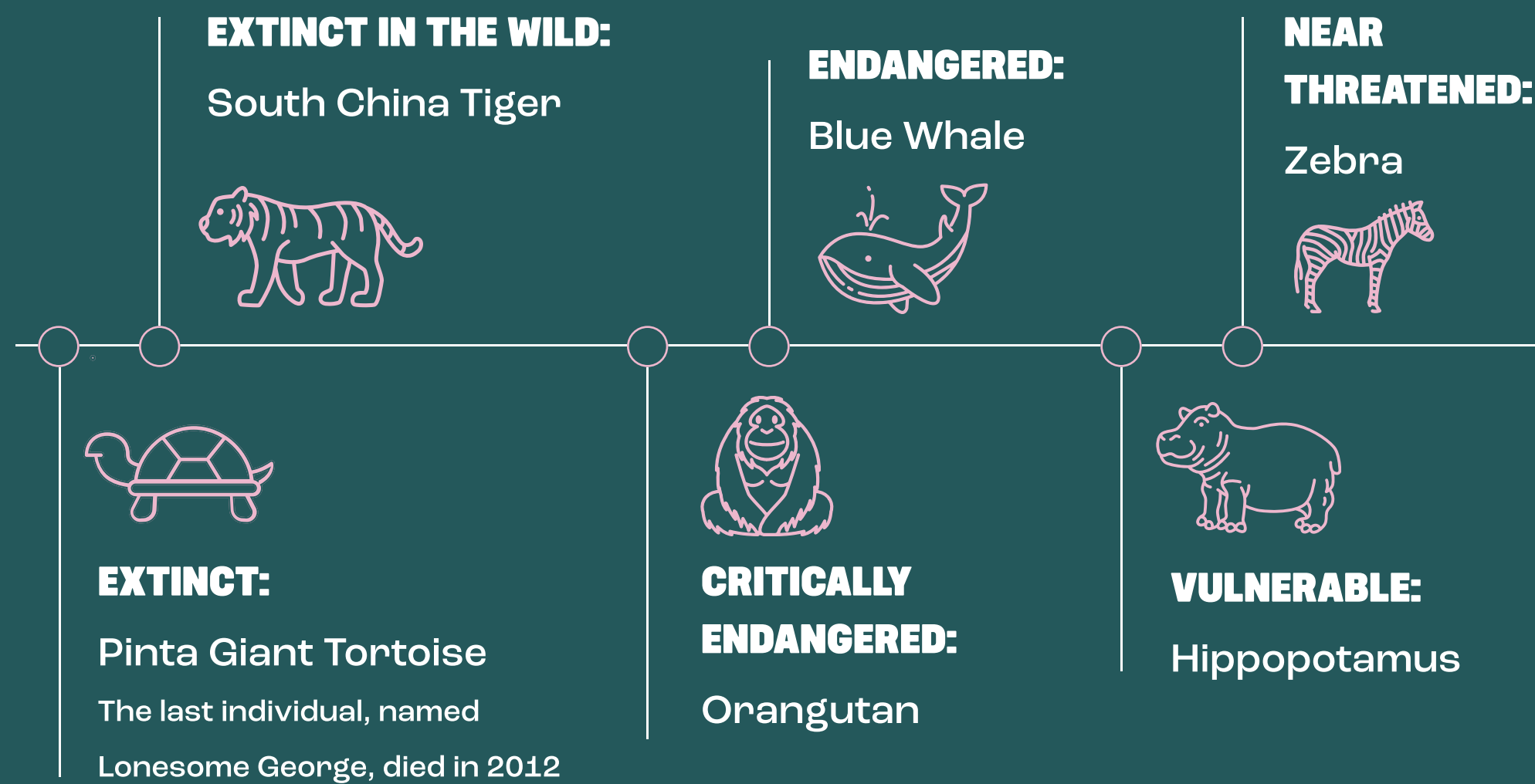
C4A

#1 EXTINCTION OF ANIMALS AND PLANTS

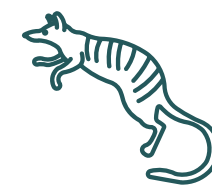
Animals and plants are threatened by Earth's growing population. Humans need more space, consume more and generate more waste. We are currently experiencing the sixth mass extinction of animals and plants.

WHAT IS EXTINCTION?

Extinction occurs when species of animals or plants disappear.



In Australia, **533 animal** and **1,385 plant species** are currently listed as Endangered or Critically Endangered. Most endangered animals in Australia:



Numbat



Gouldian finch



Koala
(especially vulnerable after the 2019-20 bushfires)



Mountain pygmy-possum



Orange-bellied parrot

Plants that suffered the most from Black Summer bushfires:



Eucalypt plants



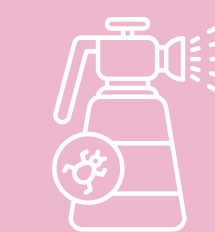
Orchids



Rainforest trees

WHAT ARE THE CAUSES?

Harmful farming activities:



The use of pesticides pollutes the air, and deforestation destroys animals' and plants' homes.

Extreme weather events:



The "Black Summer" bushfires killed or displaced 3 billion animals: 60 000 of them were koalas. This is more than the population of Tasmania!



#1 EXTINCTION OF ANIMALS AND PLANTS

HOW CAN YOU TAKE ACTION?

→ JOIN A LOCAL BRIGADE TO PARTICIPATE IN LISTING ENDANGERED ANIMALS.



→ Carla Grace is an Adelaide-based artist. She creates realistic wildlife paintings

GET INSPIRED!

→ The Wild At Art competition invites children to learn about Australia's threatened animals and plants whilst creating drawings



GET CREATIVE!



→ WHICH ENDANGERED ANIMAL IS DEAREST TO YOU? DRAW A PICTURE OF IT!



→ GO TO THE BOTANICAL GARDENS AND GET CREATIVE ABOUT ENDANGERED PLANTS!

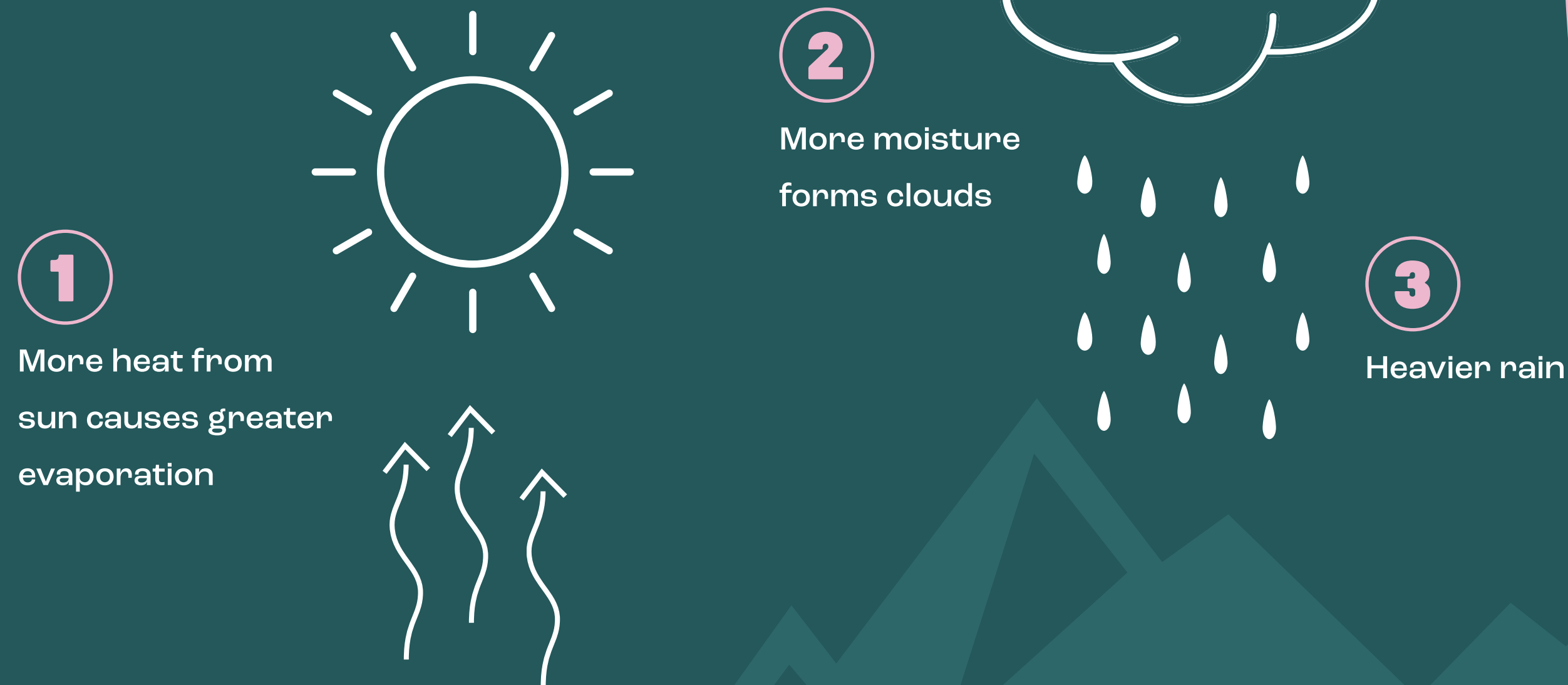


#2 EXTREME WEATHER EVENTS (BUSHFIRES, FLOODS, DROUGHTS)

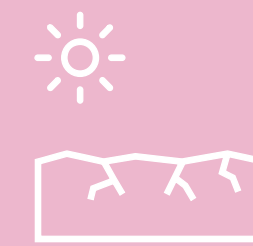
Although it is normal for the planet to experience changes in temperatures, human activities that are disrespectful towards the planet cause frequent and intense changes in the climate nowadays.

HOW DOES IT WORK?

How higher temperatures cause extreme rainfall

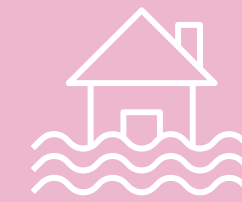


WHAT ARE EXTREME WEATHER EVENTS?



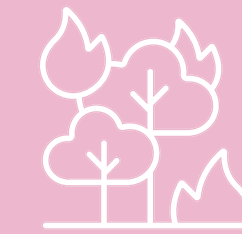
Droughts:

A drought is a period of dry weather, when an area gets less than its normal amount of rain. Because crops and other plants need water to grow and land animals need water to live, droughts can be very dangerous.



Floods:

A flood is an overflow of a large amount of water beyond its normal limit.



Bushfires:

A bushfire is a fire in nature that spreads rapidly. In areas with a lot of vegetation, dried out trees become the perfect source of fuel for fires, making them extremely difficult to put out.

During “Black Summer” in 2019-2020, bushfires destroyed millions of trees.



The flood of the river Murray in December 2022: the size of the river went from 150m to 6 km in width. This is equivalent to 100 football pitches!

#2 EXTREME WEATHER EVENTS (BUSHFIRES, FLOODS, DROUGHTS)

GET CREATIVE!

HOW CAN YOU TAKE ACTION?

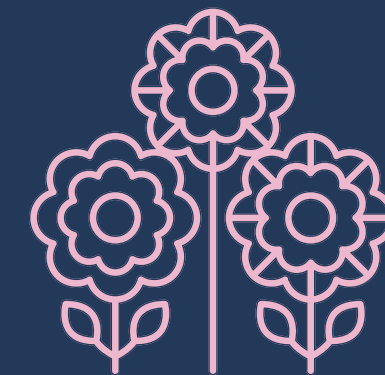
- PARTICIPATE IN REGREENING ACTIONS BY PLANTING OR GROWING A GARDEN
- PROMOTE THE CONSUMPTION OF LOCALLY-GROWN FOOD
- ORGANISE EVENTS AT SCHOOL THAT PROMOTE CLIMATE CHANGE AWARENESS

→ Australian artists are using charcoal left behind from the Black Summer bushfires in Australia to create empowering pieces of art.



GET INSPIRED!

→ This painting in particular is artist Jaimee Paul's Wounded Healer, and is dedicated to tree climber Kai Wild who has helped save more than 70 koalas from the bushfires.



→ WHAT WOULD YOUR DREAM GARDEN LOOK LIKE? LET YOUR IMAGINATION FLOW, AND CREATE AN ARTWORK OF IT!



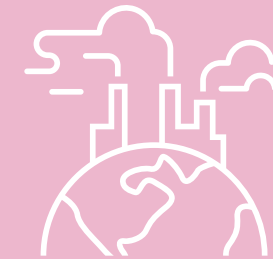
#3 POLLUTION OF OUR AIR AND WATERWAYS

WHAT IS POLLUTION?

Pollution is anything that makes the Earth dirty and unhealthy. It happens when the air and water are contaminated by substances that are harmful.



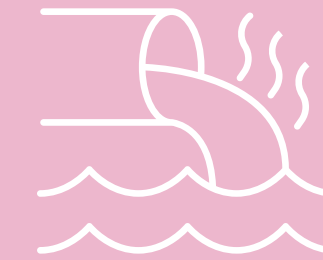
WHAT ARE THE CAUSES?



Air pollution:

When abnormal substances enter the air we breathe, through:

- Burning fossil fuels for industrial practices
- Using motor vehicles such as cars



Water pollution:

When dangerous foreign substances like pesticides, fertilisers and chemicals enter into water, through:

- Dumping plastic into water: plastic never fully decomposes and can be a choking hazard for many marine animals



Every 60 seconds, we dump the equivalent of one garbage truck straight into the ocean. If we carry on as usual, this could mean there will be more plastic than fish in the world's oceans in 2050. An estimated 1 000 turtles die each year due to plastic ingestion.

- Use of pesticides for farming activities



#3 POLLUTION OF OUR AIR AND WATERWAYS

HOW CAN YOU TAKE ACTION?

→ PARTICIPATE IN BEACH CLEANUPS

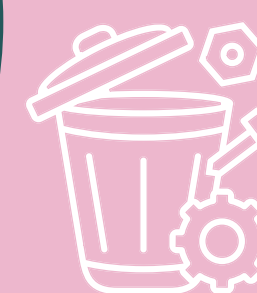
→ USE GREEN TRANSPORTS: GET TO SCHOOL BY BIKE/SCOOTER/SKATEBOARD, OR BY PUBLIC TRANSPORT

→ PUT YOUR PLASTIC IN THE RECYCLING BIN



GET INSPIRED!

→ The Australian artist Barefooted Welder creates life-size metal sculptures of creatures, using discarded metal he picks up in landfills.



GET CREATIVE!



→ CREATE AN ARTWORK USING ITEMS PICKED UP FROM THE BEACH CLEANUPS



→ CREATE A CAMPAIGN ABOUT RIVER POLLUTION